

*Sincerely hope new and regular customers
to ask us for competitive offers to create smarter
procurement solutions for you.*



HENAN GANG IRON & STEEL CO., LTD
河南鑫钢翔贸易有限公司



HENAN GANG IRON & STEEL CO., LTD
Sales Dept
Tel | Fax: +86-371-88884766
Email: admin@gangsteel.com
URL: www.gangsteel.net

CHINA · ZHENGZHOU
中国 · 郑州

COMPANY PROFILE 企业概况

ABOUT US 关于我们

Henan Gang Iron and Steel Co., Ltd is a top agent duly authorized by Wuyang Steel of HBIS (Hebei Iron & Steel Co., Ltd) in China, with rich experience in supplying high-quality medium-thick plates, and super thick & heavy steel plates in stock and in futures.

Besides, gangsteel agent products from other leading mills and provide service for steel processing, including TISCO (TG), TPCO, ZPSS, WISCO, JISCO, Shougang, Xinyu steel, NISCO, Jinan steel, Xingcheng Mill, etc.

The main steel products consist of 13 series such as: low alloy structure plate, carbon structure plate, alloy structure plate, bridge plate, building structure plate, shipbuilding and oil Platform plate, boiler and pressure vessel plate, mould plate, pipeline plate, armored tank plate, Profile Steel, etc, mainly service for pressure vessel, boilers, destined for Refineries, Petrochemical plants, Oil platforms onshore & offshore, shipbuilding yard, power stations, air cooler, heat exchanger, etc.

Supply specifications of Hot-rolled Plates: THK 5-750 xWidth 1500-4500x Lgth 3000-27000mm

Supply specifications of Cold-rolled Sheets: THK 0.54mm xWidth 1000-2000x Lgth / Coil

The Maximum weight per piece can be upto 65MT.

The adopted standard of steel plate: ASTM ASME EN JIS ISO DIN AISI API, and so on.

For shipbuilding plate, we have been approved by ABS LR DNV CCS BV KR NK GL RINA.

We also provide custom-made machining service, involved with cutting, welding, pretreatment, Painting, ball blast, etc.

We have enjoyed a good reputation via our fast ordering procedure, timely delivery, good quality and efficient service.

Sincerely hope new and regular customers to ask us for competitive offers to create smarter procurements solutions for you.

河南鑫钢翔贸易有限公司是经河北钢铁集团舞阳钢厂正式授权的一级代理商，在供应优质中厚板、超宽超厚板有十分丰富的经验，有大量库存和期货资源可供选购。

此外，我公司还可为客户代订国内其他各大钢厂产品，并提供钢材加工服务，主要合作钢厂：太钢、天津大无缝、张家港浦项钢铁、武钢、酒钢、首钢、新钢、湘钢、南钢、济钢、兴澄特钢，等。

产品范围主要有13大系列：压力容器锅炉板、低合金高强板、耐腐蚀钢、桥梁用钢板、合金结构钢、合金结构钢、普碳板、造船&海上钻井平台用钢、不锈钢、管线钢、型钢等。

供应规格(mm):

热轧板: THK 5-750 xWidth 900-4800 xLgth 3000-27000mm

冷轧卷板: THK 0.54mm xWidth 1000-2000 x Lgth /Coil

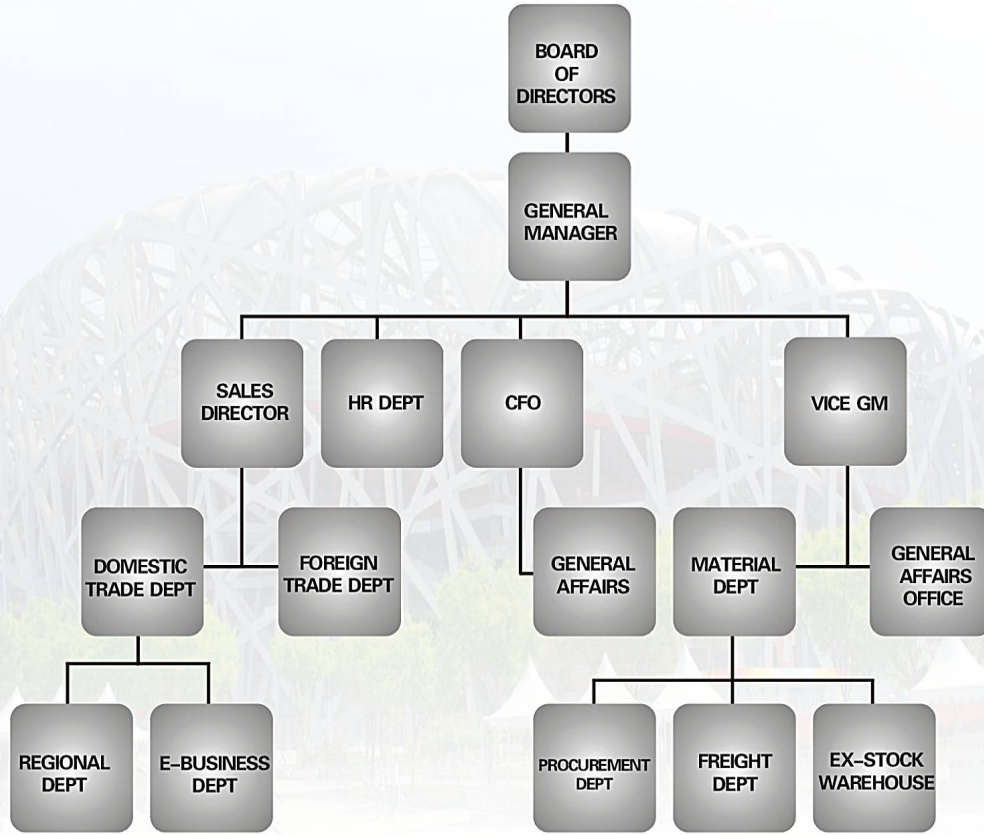
最大单重可以达到65吨，如需定制规格，我司可与钢厂协议生产。

我公司经营的船板&海上钻井平台用材现已通过ABS LR DNV CCS BV KR NK GL RINA九大船级社认证，品质出色，价格公道，交货及时，服务周到。

热忱欢迎新老顾客来电来函垂询，我司将为您提供最佳报价和行之有效的解决方案。

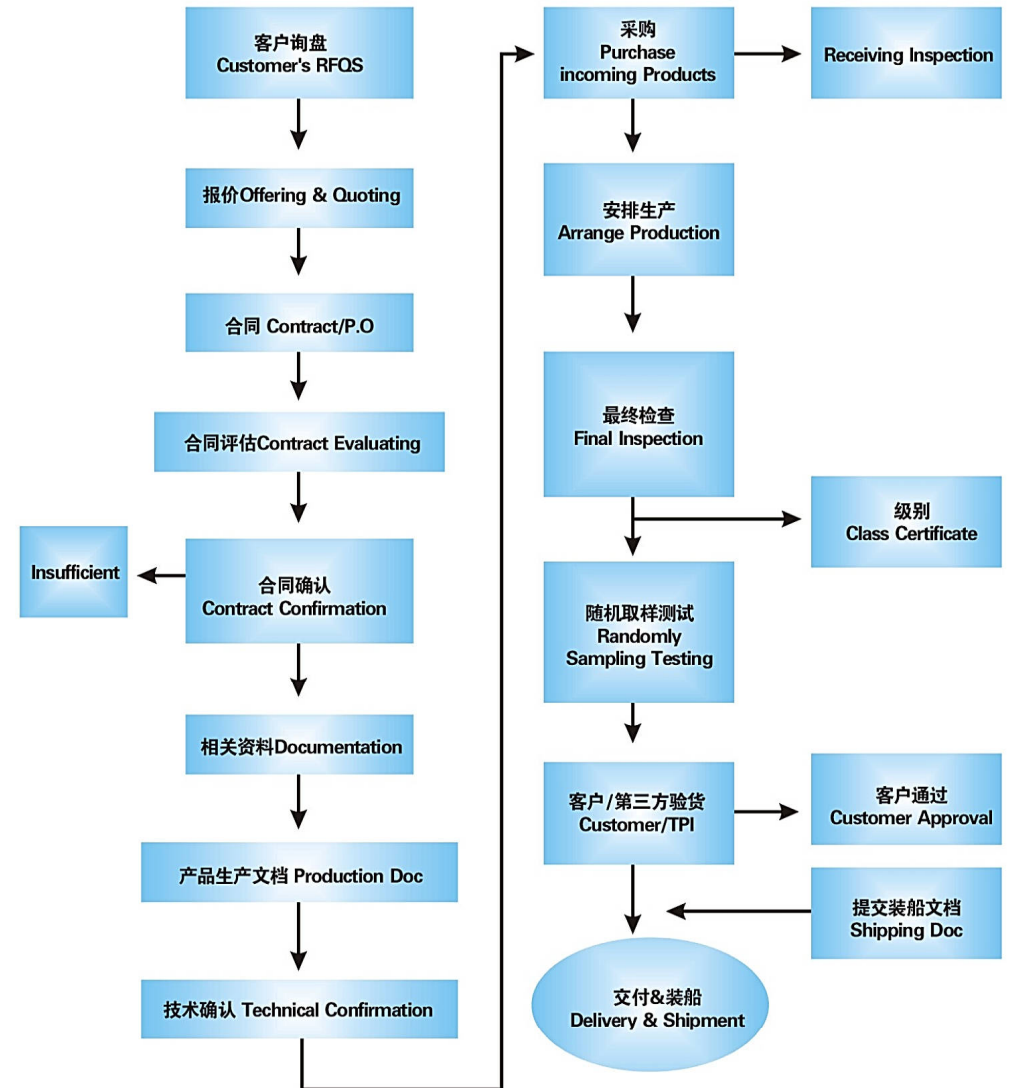
ORGANIZATION CHART

公司组织结构



QUALITY PLAN

质量控制计划



PRODUCT CATALOGUE

产品目录

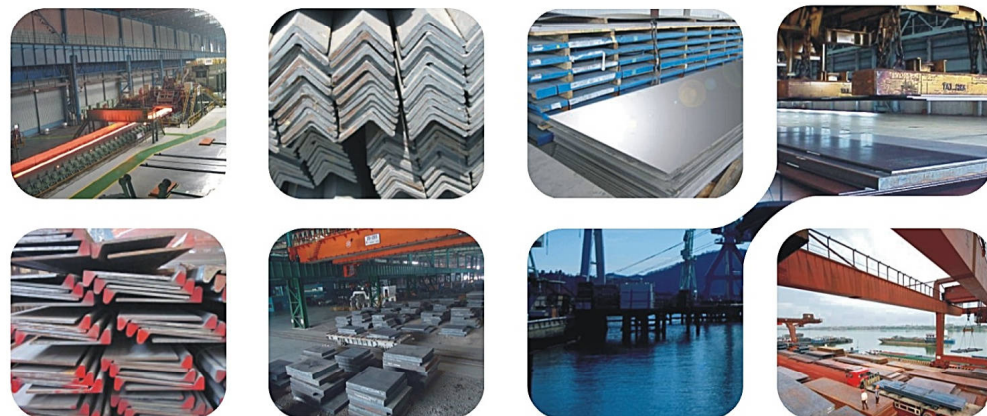


NO. 序号	Steel Type 钢种	Main Grades 代表牌号	Adopted Standards 执行标准	Size (mm) 产品规格
1	Steel Plates for Boiler and Pressure Vessel 锅炉和压力容器用钢板	Q245R,Q345R,Q370R	GB713	T: 5250 W: 900-4800 L: 3000-27000
		12Cr1MoVg,19Mng 20R,16MnR,15MnVR 15CrMoR,13MnNiMoNbR 15MnNbR,15MnVNR 16MnDR,09MnNDR 15MnNDR 12Cr2Mo1R,14Cr1MoR 07MnCrMoVR 07MnNiCrMoVDR SB410,SB450,SB480 SPV235,SPV315,SPV355 SPV410,SPV450,SPV490 SGV410,SGV450,SGV480 SBV1A,SBV1B,SBV2,SBV3 SEV245,SEV295,SEV345 H I, H II, 10CrMo910,15Mo3 13CrMo44,19Mn6 BHW35 13MnNiMo54 1Cr0.5Mo,2.25Cr1Mo 1.25Cr0.5Mo	GB3531 GB150	
		(S)A203Gr.A/B/D/E/F; (S)A204 Gr (A,B,C); (S)A285 Gr (A, B, C), (S)A299 Gr (A, B), (S)A302M(Gr.A,B,C,D);(S)A387(Gr.5, 11,12,22) A514Gr.Q/F/E/B/A, (S)A515Gr (60, 65, 70), (S)A516 Gr (60, 65, 70),+N+HIC/NACE (S)A517Gr.Q/F/E; (S)A533M(Type I,II); (S)A537 (CL.1,CL.2, CL.3) (S)A553 (Type I,II); 06Ni9, X7Ni9, X8Ni9; (S)A662M (Gr.A,B,C) (S)A737M (Gr.B,C) (S)A738M (Gr.A,B,C)	JIS G3103 JIS G3115 JIS G3118 JIS G3119 JIS G3124 DIN17155	
		P235GH,P265GH,P295GH P355GH,16Mo3,13CrMo4-5 10CrMo9-10,11CrMo9-10 A42,A52; 20MnHR,20HR, 16MnHR; 161G430; WDB620	EN10028-2 NFA36-205 Bs1501	
		(S)A203Gr.A/B/D/E/F; (S)A204 Gr (A,B,C); (S)A285 Gr (A, B, C), (S)A299 Gr (A, B), (S)A302M(Gr.A,B,C,D);(S)A387(Gr.5, 11,12,22) A514Gr.Q/F/E/B/A, (S)A515Gr (60, 65, 70), (S)A516 Gr (60, 65, 70),+N+HIC/NACE (S)A517Gr.Q/F/E; (S)A533M(Type I,II); (S)A537 (CL.1,CL.2, CL.3) (S)A553 (Type I,II); 06Ni9, X7Ni9, X8Ni9; (S)A662M (Gr.A,B,C) (S)A737M (Gr.B,C) (S)A738M (Gr.A,B,C)	ASTM ASME	

NO. 序号	Steel Type 钢种	Main Grades 代表牌号	Adopted Standards 执行标准	Size (mm) 产品规格
2	High Strength Low-alloy Steel Plates 低合金高强度板	12Mn,15MnVN,16Mn,15MnV 14MnNb Q295(A,B),Q345(A,B,C,D,E) Q390(A,B,C,D,E) Q420(A,B,C,D,E) Q460(C,D,E) Q500(D,E),Q550(D,E) Q620(D,E),Q690(D,E) S460Q (QL, QL1), S500Q (QL, QL1), S550Q (QL, QL1), S620Q (QL, QL1), S690Q (QL, QL1), S890Q (QL, QL1), S960Q (QL, QL1), etc SM490(A,B,C),SM490Y(A,B) SM520(B,C),SM570 S44-3,Si52-3,Si50-2 Si60-2,Si70-2 SIE315,SIE355,SIE380 SIE420,SIE460,SIE500 A572M(Gr42,50,60,65) A573Gr.70/65/58; A633M(A,B,C,D,E) S275(JR,JO,J2G3,J2G4) S355(JR,JO,J2G3,J2G4, S275N,S275NL,S355N,S355NL S420N,S420NL,S460N,S460NL K2G3,K2G4) E395,E335,E360 50(A,B,C,D,DD,EE,F) 43(A,B,C,D,EE),55(C,EE,F) WH60,WH410LK(BB41BF) WH490LK(BB503) E355(DD,E),E460(CC,DD,E) E420(DD,E),E460(DD,E) E550(DD,E),E690(DD,E) Fe430(A,B,C,D) Fe510(B,C,D) WDB690,WDB780,WH70 Wh80	Gb1591 GB/T1591 GB/T16270 EN10025-6 JIS G3106 JIS G3101 DIN17100 DIN17102 ASTM EN10025- EN10113 BS4360 ISO4950-2 ISO4950-3 ISO630 GB4172 GB4171 JIS G3114 ISO4952	T: 4250 W: 900-4800 L: 3000-27000

NO. 序号	Steel Type 钢种	Main Grades 代表牌号	Adopted Standards 执行标准	Size (mm) 产品规格
3	Anti-Corrosion/ Weather-resistant steel plate 耐腐蚀/耐候钢	16MnR(HIC),08Cu,16MnCu, S137-3Cu3 A588Gr.(A,B,C,K),A242MCL2; Cor-TenB,10CrMoAL 16CuCr,12MnCuCr; 15MnCuCr,15MnCuCr-QT 09CuPCrNi-(A,B), Corten A/B, S355J0WP, S355J2WP, MARILOY G400A, MARILOY S490A, B480GNQR, B460NQR; SMA400(AW,BW,CW); SMA400(AP,BP,CP) SMA490(AW,BW,CW);SMA490(AP,BP,CP); SMA570W,SMA570P;Fe235W,Fe355W; WR50B,WR50C	A588, Corten-A/B, A242, EN10025-5, etc	T: 1.50-300 W: 1000-300 L: 1000-12000
	Wear-resistant steel plate 耐磨钢	NM360/400/450/500, Hardox400/450/500/600, XAR400/450/500/600, RAEX400, RAEX450, RAEX500	GB/Chinese STD, Hardox, XAR, RAEX	T: 5-80 W: 1000-3000 L: 1000-12000
4	Steel plate for building bridge 桥梁用结构钢	16q,16Mnq,16MnCuq 15MnVq,15MnVNq 14MnNbp,Q345q,Q420q A709 (Gr.36,50,50W,70W)	YB168 YB(T)10 GB/T714 ASTM	T: 5300 W: 900-4800 L: 3000-27000
5	Steel Plates for Structure 建筑结构钢	Q235GJ,Q345GJ SN400(A,B,C),SN490(B,C) 275(D,E,EZ),355(D,E,EM) 355EMZ,450(EM,EMZ)	Yb4104 JIS G3136 Bs7191	T: 5700 W: 900-4800 L: 3000-27000
6	Alloy construction steel plate 合金建筑用钢	15CrMo,20CrMo,30CrMo 35CrMo,20Cr,40Cr 20Mn2,40Mn2 20CrMnMo,12Cr1MoV 30CrMnSiA,RQ65 25CrMo4,34CrMo4,42CrMo4	GB3077 GB11251 EN10083-1	T: 6700 W: 900-4800 L: 3000-27000
7	Steel Plates for Die and Mould 模具用钢	P20,718,P80 S45C-S55C 45-55,50Mn SM45-SM55,SM3Cr2Mo SM3Cr2Ni1Mo NM360,NM400	JIS G4051 GB711 YB/T107, technology agreement	T: 6700 W: 900-4800 L: 3000-27000
8	Carbon construction steel plate碳素结构钢	Q195, Q235, Q275; 10-55#; 20Mn-50Mn SS400, SM400(A,B); S10C-S55C; S137-2,S137-3 ASTM A36,A283(A,B,C,D) 1010-1050; 40(A,B,C,D,EE) S235(JR,JO,J2G3,J2G4); 1C22,1C25,1C30,1C35; 1C40,1C45,1C50,1C55; Fe360(A,B,C,D)	GB3274, GB711 JIS G3101, JIS G3106 JIS G4051, DIN17100 ASTM, BS4360 EN10025-2, EN10083-2, ISP630	T: 3700 W: 900-4800 L: 3000-27000

NO. 序号	Steel Type 钢种	Main Grades 代表牌号	Adopted Standards 执行标准	Size (mm) 产品规格
9	Steel Plates for Shipbuilding and Platform 船体及海洋平台用结构钢	A,B,D,E(Z15,Z25,Z35) AH32-FH32(Z15,Z25,Z35) AH36-FH36(Z15,Z25,Z35) D40,E40,EQ56,EQ70,E690,F690	CCS,DNV,GL, LR,BV,ABS NK,KR,FINA Gbs313	T: 4700 W: 900-4800 L: 3000-27000
		API SPEC 2H Gr42,Gr50	API	
10	Stainless steel materials 不锈钢	304 304L 304LN 304Ti 304H 309S 309H 310S 316L 316LN 316H 316Ti 316N 317 317L 317LN 321 321H 321Ti; 405 410S 430 444 2205; 904L 904 201 202 301 302, etc, in the shape of CR/HR coils, sheet, plate, pipe & tubes, Angles, flat bars, Flange,	EN10028-7, JISG4304, JISG4305, Q/140000, Tb3502, (S) A240/ (S) A240M	T: 0.5-60 W: 200-2500, L: 1000-10000
11	High Strength & Toughness Steel Plates 高强高韧性钢	GS80 28Cr2Mo(GY4) 26SiMnMo(GY5) 30CrMnMoRE(603) 30CrNi3MoV(675)		T: 8700 W: 1500-4500 L: 3000-27000
12	Steel Plates for Pipe line 管线钢	X42,X46,X52,X56 X60,X65(M),X70,X80,X100,X120	API 5L	T:10-120 W:900-4800 L: 3000-27000
13	Profile STEEL 型钢	ANGLE BAR 角钢	A/B/D/E/AH32/DH32/AH36/EH36; Q235B/345B/A36/SS400/S355JR/J2	CCS,DNV,GL,LR,BV, ABSNK,KR,FINA, GB5313,ASTM,JIS, EN10025-2
		BULB FLAT 球扁钢		
		FLAT BAR 扁钢		
		H/U-BEAM 工字钢 槽钢		



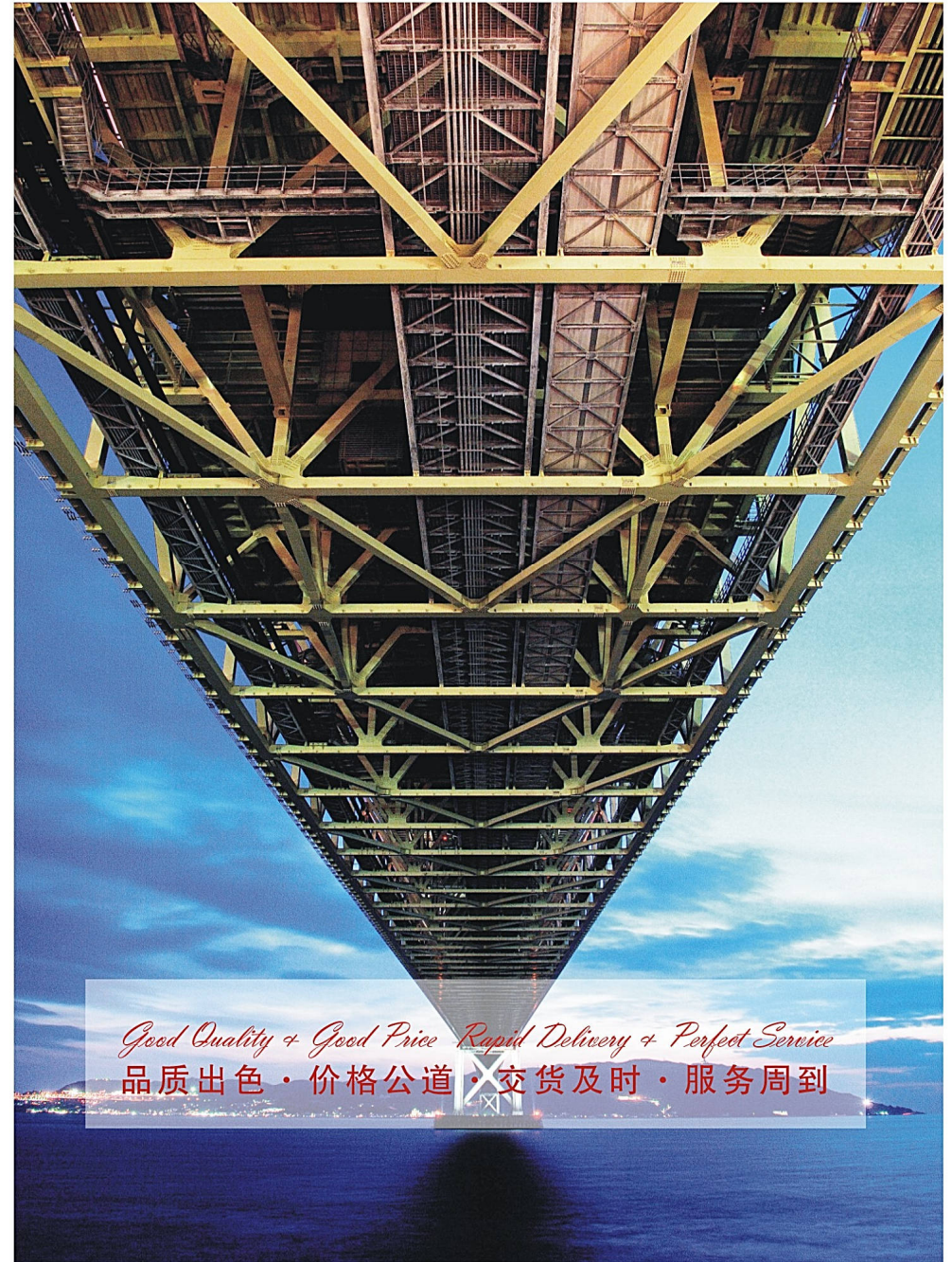
BRIEF INTRODUCTION TO OUR PROCESSING FACTORY

— PROCESSING SERVICE 钢铁加工服务简介

Gang steel integrates the advantageous resources to undertake services for steel plate cutting, welding, fashioning and precision machining.

鑫钢翔整合资源优势，承接钢材切割、焊接和精加工服务。

加工设备 Processing equipment	SP2016, SP3016, SP3021, LR3021, LP4025YZ, BMC-110R2 等大型加工设备二十五台，以及数十台各类加工设备，形成了立式、卧式、龙门等生产体系，25 Large processing equipment sets of Sp2016, SP3016, SP3021, LP3021, LP4025YZ, BMC-110R2 etc, and dozens of all kinds of processing equipment, formed the vertical and horizontal, gantry production system.			应用于重型机械设备，如造船、工程机械、水电设备、环保设备、纺织设备、机床、锻压、冶金机械制造等领域
	数控火焰切割机二台，年切割加工能力2万余吨 Two CNC flame cutting machine, the annual cutting capacity of 20,000 Tons			
加工范围 Production Range	中厚、特厚、特宽板材异形件等的切割、焊接、精加工服务 Cutting, welding and finish machining service for medium & super thick plate-shaped parts	厚度 thickness	0.5—700mm	Used heavy machinery, such as shipbuilding, engineering machinery, hydropower equipment, environmental equipment, textile machinery, machine tools, forging, metallurgical machinery etc.
		宽度 width	≤4800mm	
		长度 length	≤27000mm	
加工公差 Process Tolerance	切割方位 Cutting position	单位 Unit	公差 Tolerance	
	直线度 Straightness	1000mm	±0.5mm	
	垂直度 Verticality	100mm	±3mm	
	外形尺寸 Dimensions		±1mm	
	切割面光洁度	≤100mm	125	
	Cutting surface degree	≤100mm	25	
加工特点 Process Feature	切割面平整光洁、切边整齐、无需用户二次加工，可直接按技术尺寸安装使用，具有正负公差吻合率高、品质优良等特点 Cutting surface smooth and clean, trimming neatly, without user, secondary processing, can be installed directly on the technical dimension, consistent with a high rate of positive and negative (\pm) tolerances, quality, etc.			
市场范围 Market Range	切割件产品深受国内厂家好评，并远销中东、东南亚、欧美、韩国、巴西和印度等国家和地区 Cut pieces of products are given high praise by domestic manufacturers and exported to the Middle East, Southeast Asia, Europe, Korea, Brazil and India and other countries and regions.			



Good Quality + Good Price Rapid Delivery + Perfect Service
品质出色 · 价格公道 · 交货及时 · 服务周到

GANGSTEEL PARTIAL PROJECT CASES DURING 2013-2010 我司部分工程案例 (2013-2010倒序)

2013

- 2013-08 Gangsteel cooperated with KEYMAX GROUP for GL/A36 steel plate approved by GL Class.
- 2013-08 Gangsteel cooperated with LLM69-3 JSC for SS400 U-beam and Angle steel.
- 2013-7-262012-11-26 Gangsteel cooperated with PTCPE from Indonesia for A515GR70, A240 TP309S.
- 2013-07 Gangsteel cooperated with DW Heavy Industries for S690QL1 with 150mm in thickness.
- 2013-6-26 Gangsteel cooperated with SMB Corp. for 60.369 Tons of SA387 Gr22 & 12 & 11 plates.
- 2013-03-28 Gangsteel cooperate with AGFTES from Jordan for Hardox 400.
- 2013-03-04 Gangsteel cooperated with Royal Dutch Shell PLC & MaxMega Pte Ltd for 136 Tons of A537 Class 2 Plates.
- 2013-01-25 Gangsteel cooperate with AANT. EST from Saudi Arabia for CORTEN A (Cor-TenB)

2012

- 2012-11-20 TOR Minerals (M) Sdn.Bhd. for A240 Type 310S, A240 Type 316L
- 2012-11-15 Gangsteel cooperated with ASAD TECH for A588 Grade A steel plates.
- 2012-11-15 cooperated with INOX Offshore & Onshore CO. from Germany for ABS / EQ56 Plate.
- 2012-11-05 Gangsteel cooperated with Chi Loo Petrochemical Corp for 1700 Tons of SA516 GR60 Plates.
- 2012-10-27 Gangsteel cooperated with BTTPF for 123.951 Tons of SS 304 & 309S & 310S & 316L & 321.
- 2012-09-14 Gangsteel cooperated with Palco Marine & IGAWARA for 263 Tons of ABS & LR Grade A & AH36 Angle and bulb flat (HP).
- 2012-08 Gangsteel cooperated with MONELCA CO., LTD from Ecuador 184.171 tons of API 5L X52 Plates.
- 2012-08 Gangsteel exported 311 Tons of ASTM A36 PL to Venezuela.
- 2012-7-26 Gangsteel cooperate with AM from India for MARILOY S490A.
- 2012-06-24 Gangsteel cooperated with AG CORP from USA for 90 Tons of ASTM A285 Gr.C PL.
- 2012-05-07 Gangsteel cooperate with KNPC from Kuwait for 67Ton of ASTM A573GR70 & A516GR60
- 2012-05 Gangsteel cooperated with OAKWELL SHIPYARD CO., LTD. for BV EH36 130*2200*5000mm.
- 2012-02 Gangsteel cooperated with Total Marine Solution for 300 Tons of S355NL plates with 120MM, 200MM 250MM in THK.
- 2012-01-02 Gangsteel cooperated with Arabian Ocean Services L.L.C. for DNV E420 ship plate.

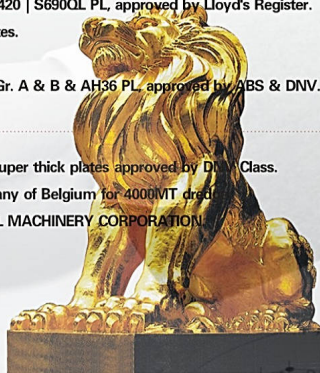
2011

- 2011-11 Gangsteel cooperated with DWHI from South Korea for 90 Tons of S355NL | NV/E420 | S690QL PL. approved by Lloyd's Register.
- 2011-11 Gangsteel cooperated with KISCO GROUP in Kuwait for 89 Tons of A516GR70 plates.
- 2011-06-17 Gangsteel cooperated with SEOUL MACHINERY SA302 GRADE B steel plate.
- 2011-3-31 Gangsteel cooperated with JAYA Shipyard from Singapore for 1800.18 Tons of Gr. A & B & AH36 PL. approved by ABS & DNV.

2010

- 2010-10 Gangsteel cooperated with Singapore ASL SHIPYARD for 300 Tons of DNV FH32 super thick plates approved by DNV Class.
- 2010 Supplied about 1000 Tons of ASTM A514Gr.Q with 152.4mm in THK with JDN Company of Belgium for 400QMT dred.
- 2010 Supplied about 300 Tons of S355NL with 250mm and 290mm in THK to CHINA STEEL MACHINERY CORPORATION.

And so on.....



QUALITY APPROVED BY MAIN TPIA 部分知名第三方检测机构检测通过我司产品

